

Tire Changers & Accessories
Wheel Balancers & Accessories
Lifts
Rubber Blocks
Lift Pads
Rolling Jacks
Work Stations

SERVICE EQUIPMENT

Ascot Supply Tire Changer

MANUAL TIRE CHANGER

- Small tire changing system for lawn & garden, ATV and other small tires/wheels
- Not for passenger tires
- Adjustable to accommodate multiple tire/wheel sizes
- High quality, energy saving & environmentally friendly
- Portable and equipped with professional accessories
- Can be operated easily without the use of power or pneumatic supplies
- Works for an impressive range of tires
- Great for family and commercial garages, racing teams, emergencies and any time a convenient changer is required

OPTIONAL BASE PLATE FOR MANUAL TIRE CHANGER

- Optional base plate is sold separately
- Base plate eliminates anchoring to the floor and provides a non-slip surface for the technician
- Base plate dimensions: 24" x 30"
- 12 gauge steel (2.5 mm)



ADJUSTABLE

NO NEED FOR
POWER OR
PNEUMATICS

ASCOT NO.	MFG. NO.	DESCRIPTION
441-00202	BJ-CO2	Ascot Supply Manual Tire Changer
441-00002	BJ-CO2-BASEPLATE	Optional Base Plate for Manual Tire Changer



CEMB Tire Changers

SM628BPS ADVANCED SWING ARM TIRE CHANGER WITH BEAD PRESS SYSTEM

- Quick-change steel mount head with plastic protectors and polymer mounting head • Self-centering, dual clamping cylinder heavy duty turntable • Clamp up to 32" diameter rims and tires up to 44" diameter • Heavy-duty 220V, 1Ph phase inverter, constant torque two-speed (8-15rpm) 220V 3Ph motor • High-Performance BPS (Bead Press System) for simple servicing of stiff side wall tires • Press cone kit allows simple push down external rim clamping • Lower bead roller demounts tires without using the mounting head • Adjustable two-way high-power bead breaker side-shovel with protector sleeve • Two stage tire inflation • Jaw-placed jets and tire inflator includes accumulator safety limiter

SM645HPA PERFORMANCE TILT BACK TIRE CHANGER WITH HPA BEAD PRESS

- Automatic tilt-back mount-demount arm re-positions for next wheel without adjustments • Heavy-duty 110V motor with high torque, handles the difficult sidewall tires and deep drop center rims • Bead breaker shovel: Adjustable to the correct angle to fit diameter and width of tire • Two-stage tire bead sealing inflation jets • Tire inflator includes safety limiter • HPA two-sided press arm system is a must have for simple servicing of stiff sidewall tires and deep drop center rims • Includes press arm, press follower and two tire lifter discs • Optional polymer mount head kit

SM825 SWING ARM PASSENGER & LIGHT TRUCK TIRE CHANGER

- Air tank in tower • Dual clamping cylinders • Semi-automatic swing arm • Inflator jets on each clamp • Inserts protect aluminum wheels • Adjustable bead breaker



HEAVY DUTY TURNTABLE

SWING ARM
AIR TANK IN TOWER

443-62801

443-64501

443-91825

CEMB TIRE CHANGER SPECIFICATIONS

ASCOT NO.	MFG. NO.	POWER SUPPLY	INSIDE CLAMPING	OUTSIDE CLAMPING	MAX TIRE OUTSIDE	BEAD BREAKER FORCE	MAX RIM WIDTH	GROSS SHIPPING WEIGHT
443-62801	SM628BPS	220VAC	14" - 27"	11" - 24"	44"	6393 lb.	15.5"	630 lb.
443-64501	SM645HPA	110VAC	14" - 26"	12" - 24"	47"	6790 lb.	13.5"	1050 lb.
443-91825	SM825	110 VAC	15" - 26"	13" - 24"	47"	5500 lb.	15"	630 lb.



⚠️ WARNING: For more information go to www.P65Warnings.ca.gov.

SERVICE EQUIPMENT



Corghi Tire Changers

A2024TI 2-SPEED TILT BACK TIRE CHANGER

- Ideal for all OEM and aftermarket wheels • Preferred market choice for reliability and long lasting performance

STURDY
TILT-BACK
TOWER



443-01274

A2030 2-SPEED TILT BACK TIRE CHANGER

- Ideal for all OEM and aftermarket wheels • Preferred market choice for reliability and long lasting performance

BUILT-IN
BEAD
BREAKER
SHOVEL



443-18134

CORGI TIRE CHANGER SPECIFICATIONS

ASCOT NO.	MFG. NO.	POWER SUPPLY	INSIDE CLAMPING	OUTSIDE CLAMPING	MAX TIRE OUTSIDE	MAX RIM WIDTH	GROSS SHIPPING WEIGHT
443-01274	A2024TI	115V/1ph/60hz	12"-26"	10"-24"	40"	26"	600 lb.
443-18134	A2030	115V/1ph/60hz	12"-28"	10"-26"	43"	28"	620 lb.



AM50 LEVERLESS TIRE CHANGER

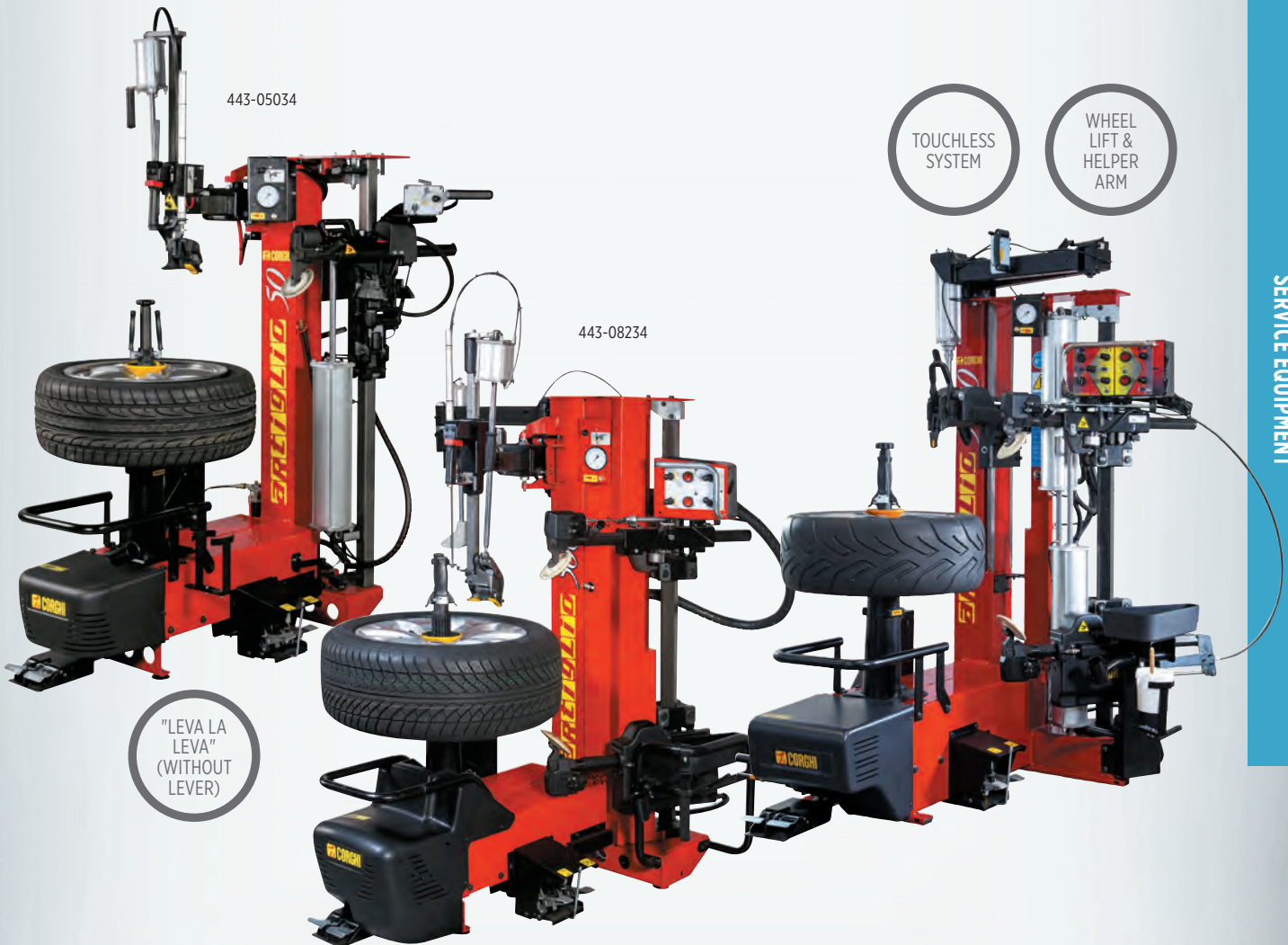
• Leverless design allows it to easily handle the toughest tire and wheel combinations in the market today • Dynamic bead breaking discs & newly designed head group provides fast & smooth operation

AM500 AUTOMATIC TIRE CHANGER

• Leverless design allows it to easily handle the toughest tire and wheel combinations in the market today • Dynamic bead breaking discs & newly designed head group provides fast & smooth operation

AM5000 TIRE CHANGER

• The Touchless system keeps the working tools away from the wheel making OEM, Low Profile, and Run Flat tires simple, safe and fast to change • The wheel lift and helper arm are standard



CORGI TIRE CHANGER SPECIFICATIONS

ASCOT NO.	MFG. NO.	POWER SUPPLY	INSIDE CLAMPING	OUTSIDE CLAMPING	MAX TIRE OUTSIDE	MAX RIM WIDTH	GROSS SHIPPING WEIGHT
443-05034	AM50	110V/1ph/50hz	—	—	47"	30"	760 lb.
443-08234	AM500	110V/1ph/50hz	—	—	47"	32"	980 lb.
443-18834	AM5000	110V/1.31ph/50-60hz	—	—	47"	28"	1290 lb.

SERVICE EQUIPMENT



AM26J ARTIGLIO MASTER TIRE CHANGER

- The Touchless system keeps the working tools away from the wheel making OEM
- Low profile, and run flat tires simple, safe and fast to change
- The wheel lift and helper arm are standard
- Dual bead breaker
- Bead depressor

AM28 ARTIGLIO MASTER TIRE CHANGER

- The Touchless system keeps the working tools away from the wheel making OEM
- New demounting tool head
- Dynamic bead breaking device
- Rapid demounting procedure
- Universal wheel clamping system
- Adjustable working height
- Wheel lifter to effortlessly place wheels onto turntable

ARTIGLIO MASTER CODE TIRE CHANGER

- The Touchless system keeps the working tools away from the wheel making OEM
- Automatic wheel dimension acquisition enabling automatic tool positioning
- Touch screen system to guide user through all procedures and solutions
- Compatible with all tire types

ALL WITH TOUCHLESS TECHNOLOGY



443-16234



443-16235



443-08514

CORCHI TIRE CHANGER SPECIFICATIONS

ASCOT NO.	MFG. NO.	POWER SUPPLY	INSIDE CLAMPING	OUTSIDE CLAMPING	MAX TIRE OUTSIDE	MAX RIM WIDTH	GROSS SHIPPING WEIGHT
443-08514	Mastercode	110V/1.31ph/50-60hz	—	—	47"	32"	1,675 lb.
443-16234	AM26J	110V/1.31ph/50-60hz	—	—	40"	26"	1080 lb.
443-16235	AM28	230V/0.98 kW/50 Hz	—	—	40"	28"	970 lb.

SERVICE EQUIPMENT



A9222 SWING ARM TIRE CHANGER

- Turntable with two pneumatic cylinders capable of clamping any types of rim securely
- Extractable pedal controls for easy inspection of control area
- User-friendliness, reliability and high performance are the characteristics that make the A9222 ideal for users who need a versatile tool at an extremely competitive price
- For passenger and light trucks



443-92220

A9824 2-SPEED SWING ARM TIRE CHANGER

- Built for high volume shops at an affordable price
- Designed to handle passenger, light truck and motorcycle wheels



443-01764

A9830 2- SPEED SWING ARM TIRE CHANGER

- Built for high volume shops at an affordable price
- Designed to handle passenger, light truck and motorcycle wheels



443-19004

UNIQUE MOUNT/DEMOUNT HEAD

HEAVY DUTY TURNTABLE

SERVICE EQUIPMENT

CORCHI TIRE CHANGER SPECIFICATIONS

ASCOT NO.	MFG. NO.	POWER SUPPLY	INSIDE CLAMPING	OUTSIDE CLAMPING	MAX TIRE OUTSIDE	MAX RIM WIDTH	GROSS SHIPPING WEIGHT
443-92220	A9222	110V/1ph	13"-25"	10"-22"	42"	3.5"-12.5"	760 lb.
443-01764	A9824	115V/1ph/60hz	12"-26"	10"-24"	47"	26"	600 lb.
443-19004	A9830	115V/1ph/60hz	12"-28"	10"-26"	47"	28"	635 lb.

Tire Changer Accessories



TIRE CHANGER LUBE BOTTLES AND SWABS



844-16572

844-16259

437-13014

437-0001

ASCOT NO.	MFG. NO.	DESCRIPTION
437-00001	TS-1	11" OAL x 2" Swab Diameter
437-00002	TS-2	15" OAL x 2" Swab Diameter
437-00003	TS-3	18" OAL x 3" Swab Diameter
437-13014	313014	Hunter-Style Tire Lubricating Brush
844-16259	106259	Lube Bottle. Rim Clamp*. Fits RC-15, RC-20, 5060 and 5070 Series Tire Changers
844-16572	106572	Lube Bottle. Center-Post. Fits 4040, 4040SA and 4050 Tire Changers

COATS REPLACEMENT AIR HOSE

• For use with Coats Tire Changers • 60" long x 1/4" diameter • AC-1 Euro-style chuck • All brass connectors • Swivel fitting • Packaged 1 per bag



127-86871

ASCOT NO.	MFG. NO.	DESCRIPTION
127-86871	86871-1	60" x 1/4" Coats Replacement Air Hose

HUNTER REPLACEMENT AIR HOSE

• 60" long x 1/4" diameter • European -style air chuck • All brass connectors • Packaged 1 per bag



127-86872

ASCOT NO.	MFG. NO.	DESCRIPTION
127-86872	86872-1	Hunter Replacement Air Hose

RIM CLAMP BEAD LIFTING TOOL

• Designed for ease of lifting the bead during the tire changing operation • 20" overall length • Made from a durable chrome-vanadium material



444-81354

ASCOT NO.	MFG. NO.	DESCRIPTION
444-81354	TC181354	Rim Clamp Bead Lifting Tool

LONG SOCK FOR BEAD LIFTING TOOL

• High quality plastic sleeve prevents the rims from scratching while lifting the bead • Made from high quality, durable nylon • Ribbed design for anti-slip contact



444-22019

ASCOT NO.	MFG. NO.	DESCRIPTION
444-22019	220019	Long Sock for Bead Lifting Tool - 4 Pack

LOW PROFILE BEAD LEVER TOOL

• Angled design and extra-long length provide increase leverage • Super-grip knurled handle for increase grip • Durable high strength carbon steel construction • Reduces strain on user's hand and wrist • Provides technician better control of the tool against stiff side walls • Helps protect against damaging expensive wheels



444-99719

ASCOT NO.	MFG. NO.	DESCRIPTION
444-99719	99719	Low Profile Bead Lever Tool

'WING' MOUNT/DEMOUNT HEAD

For use with Hunter tire changer • Molded wing guides the tire bead into the drop center • Prevents the tire from moving above the knuckle • Faster and easier mounting process

ASCOT NO.	MFG. NO.	DESCRIPTION
444-01226	JRP11-8-11400327	'Wing' Mount/Demount Head



ADAPTER KIT FOR 'WING' MOUNT/DEMOUNT HEAD

Allows for compatibility with all Coats X-Series and RC Series tapered shaft • ADAPTER ONLY - Duckhead sold separately • Lightweight aluminum design • Precision CNC manufactured

ASCOT NO.	MFG. NO.	DESCRIPTION
444-01227	J760-424-B33CW	Adapter Kit for 'Wing' Mount/Demount Head



NYLON MOUNT/DEMOUNT HEAD ONLY

Replacement For Accuturn 20024335 • Use With Models 7700, 8910, 8911, 8922, 8944, and 8989 • Replacement For Hofmann 20024335 • Replacement For FMC/John Bean EAA 24335 • For Use On EHP Series Tire Changers • Replacement For Snap-On 24335. For Use On All Models • Head Only

ASCOT NO.	MFG. NO.	DESCRIPTION
444-01228	TC20024335	Nylon Mount/Demount Head Only



BRACKET W/ HARDWARE FOR MOUNT/DEMOUNT KIT

Bracket & Screw Kit for TC14024784 Duckhead kit • Facilitates conversion from metal head to plastic head • Pairs with TC20024335 Duckhead • Black steel construction • Bracket is reusable when Duckhead is replaced • Precision machined

ASCOT NO.	MFG. NO.	DESCRIPTION
444-01229	TC200250000	Bracket w/ Hardware for TC14024784 Mount/Demount Head Kit



NYLON TOOL HEAD FOR HUNTER TIRE CHANGERS

Replacement For Hunter RP6-710014120 • For Use On TCA34 With Serial Number 664 And Above • Tool Head For Hunter TCA34 Tire Changers

ASCOT NO.	MFG. NO.	DESCRIPTION
444-01230	TC14120	Nylon Tool Head for Hunter Tire Changers



NYLON MOUNT/DEMOUNT HEAD FOR COATS, CORGHI & HUNTER TIRE CHANGERS

Application chart below:

OEM	Part Number	Tire Changer
All Tool	G3008403	All models
Coats	83008403	RC1, 5, 10, 15, 20 Early 5060, 9010, 9024, APX90
Corghi	450310	All rim clamp (optional accessory)
Giuliano	3008403	Shaft must be turned 180° for this head to work
Hofmann	8314813	All earlier models except 1550, 1620, 1625
Hunter	RP11-8314813	TCX Series (RP11-5-400-100 Adapter required) TCX500 Requires Upgrade Shaft & Adapter Kit
Sice	8314813	M39, S40, S41, S42, S43, S45, S408MAXI, S435, S436, S436TOP

ASCOT NO.	MFG. NO.	DESCRIPTION
444-01222	TC450310	Nylon Mount/Demount Head for Coats, Corghi & Hunter Tire Changers



RED PLASTIC HUNTER MOUNT/DEMOUNT HEAD

Larger channel for difficult wheels • Specifically designed for low profile tires For Hunter TCA34 tire changers • Application chart below:

OEM	Part Number	Tire Changer
Hunter	221-675-2	TC250, TC300, TC325, TC350, TC2000, TC3250, TC3500
	221-675-2-B	TC250, TC300, TC325, TC350, TC2000, TC3250, TC3500

ASCOT NO.	MFG. NO.	DESCRIPTION
444-01224	TCR343	Red Plastic Hunter Mount/Demount Head



Tire Changer Accessories (cont.)



NYLON MOUNT/DEMOUNT HEAD, COATS & HUNTER STYLES

ASCOT NO.	MFG. NO.	DESCRIPTION
444-01220	TC183061-A	Nylon Mount/Demount Head (Coats Style)
444-01221	VT-1221	Nylon Mount/Demount Head (Hunter Style)

444-01220

GREY NYLON DUCKHEAD

- Grey nylon mount/demount head kit for low profile tires
- Use with difficult wheels
- COMPATIBLE WITH THE COATS TIRE CHANGERS: 5030, 5040, 5050, 5060, 5065, 6050, 6060, 6065, 7050, 7055, 7060, 7065, 7655, 7660, 7665

ASCOT NO.	MFG. NO.	DESCRIPTION
444-01223	TC184432	Grey Nylon Duckhead Kit for Coats Tire Changers

444-01221



STAINLESS STEEL DUCKHEAD FOR COATS TIRE CHANGERS

- Tapered stainless steel mount/demount head used on many Coats tire changers
- For steel wheels and high-volume shops dealing mostly with OEM passenger cars and light trucks
- FOUND ON COATS MODELS: 5030, 5040, 5045, 5050, 5060, 5065, 5070, 6050, 6060, 6065, 7050, 7055, 7060, 7065, 7655, 7660, 7665, 70XE1, 70XE2, 70XE3
- Includes the set screws for adjusting the angle

ASCOT NO.	MFG. NO.	DESCRIPTION
444-01225	TC182788	Stainless Steel Duckhead for Coats Tire Changers

444-01225

PLASTIC RIM PROTECTORS FOR COATS STAINLESS STEEL MOUNT/DEMOUNT HEADS

- Designed for COATS stainless steel mount/demount heads
- Made from a durable plastic material to prevent marring or scratching
- Available in packs of 2 or 12

ASCOT NO.	MFG. NO.	DESCRIPTION
444-82961	TI182961	2-Pack of Plastic Rim Protectors for Coats Stainless Steel Mount/Demount Head
444-82963	TI182963	12-Pack of Plastic Rim Protectors for Coats Stainless Steel Mount/Demount Head

444-82961,
444-82963



CEMB Heavy Duty Tire Changers

CM27T HEAVY DUTY TRUCK TIRE CHANGER

- For tube and tubeless type tires used on over-the-road Class 8 commercial trucks and some off-road tractor tires and rims
- The pivoting four-jaw clamping chuck aids as a wheel lift and prevents liabilities of manual truck tire changing by allowing the machine to perform all the heavy lifting and service work
- Mobile cable control unit
- Bi-directional rotation
- Self centering universal wheel chuck
- Rim pliers and rim lever standard

MOBILE CABLE CONTROL UNIT

RIM PLIERS AND RIM LEVER



SM56T HEAVY DUTY TIRE CHANGER

- For tube and tubeless tires used on heavier off-road farm and commercial use tractors
- Mobile cable control unit
- Two speed hydraulic pump motor
- Bi-directional rotation
- Self centering universal wheel chuck
- Self-centering four jaw clamping jaw drive system which doubles as a wheel lift
- Rim pliers and rim lever standard



2-SPEED HYDRAULIC PUMP MOTOR

MOBILE CABLE CONTROL UNIT

RIM PLIERS AND RIM LEVER

CEMB HEAVY DUTY TIRE CHANGER SPECIFICATIONS

ASCOT NO.	MFG. NO.	POWER SUPPLY	RIM CLAMPING RANGE	MAX TIRE OUTSIDE	MAX TIRE WIDTH	MAX TIRE WEIGHT	BEAD BREAKER FORCE	SHIPPING WEIGHT
446-00027	CM27T	220 VAC	13" - 27"	63"	30"	3300 lbs.	4100 lbs.	1415 lbs.
446-00056	SM56T	220 VAC	14" - 46"	90.5"	42"	3300 lbs.	6000 lbs.	2000 lbs.

SERVICE EQUIPMENT



Corghi Heavy Duty Tire Changers

HD700 HEAVY DUTY TIRE CHANGER

- For demounting and mounting inner tube and tubeless type tires for trucks, buses and industrial vehicles with annular groove or elastic ring type rims • Can be used to work easily on any rim size up to 26"

HD1300 HEAVY DUTY TIRE CHANGER

- Extremely compact dimensions for working with complete peace of mind on truck, agricultural machine and earth moving machine wheels • Features a sturdy and robust operated tool arm

HD1300R HEAVY DUTY TIRE CHANGER (WIRELESS)

- Extremely compact dimensions for working with complete peace of mind on truck, agricultural machine and earth moving machine wheels • Features a sturdy and robust operated tool arm

FOR INNER TUBE & TUBELESS TYPE TIRES

ANY RIM SIZE UP TO 26"

COMPACT IN SIZE

WIRELESS

COMPACT IN SIZE



443-03504



443-01804



443-03514

CORGI TIRE CHANGER SPECIFICATIONS

ASCOT NO.	MFG. NO.	POWER SUPPLY	MAX TIRE OUTSIDE	MAX RIM WIDTH	GROSS SHIPPING WEIGHT
443-01804	HD700	208 vac +/-10%, 3 ph., 30 amp circuit	63"	26"	1500 lb.
443-03504	HD1300	208 vac +/-10%, 3 ph., 30 amp circuit	86"	56"	2450 lb.
443-03514	HD1300R	208 vac +/-10%, 3 ph., 30 amp circuit	86"	56"	2450 lb.

SERVICE EQUIPMENT



MONSTERAGTT HEAVY DUTY TIRE CHANGER

- Significant reduction in strain • High protection of rims and tires • High performance • Maximum safety
- Reliable universal application

HD1400 HEAVY DUTY TIRE CHANGER

- Semi-automatic tire changer • Capable of handling tire widths of up to 58" and a maximum wheel weight of 4189 lb. • Electric-hydraulic operation • Features the START & STOP function, guaranteeing notable energy savings while the machine is not being used

HD1800 HEAVY DUTY TIRE CHANGER

- Works on mining, forestry and agricultural wheels and tires up to 118" and 6,600 lb. • Cordless remote control • Automatic tool head



SERVICE EQUIPMENT

CORGHI TIRE CHANGER SPECIFICATIONS

ASCOT NO.	MFG. NO.	POWER SUPPLY	MAX TIRE OUTSIDE	MAX RIM WIDTH	GROSS SHIPPING WEIGHT
443-00409	HD1400	208 vac +/-10%,3 ph., 30 amp circuit	98.5"	58"	2960 lb.
443-04002	HD1800	208 vac +/-10%,3 ph., 30 amp circuit	118"	50"	5350 lb.
443-01504	MonsterAGTT	208 vac +/-10%,3 ph., 30 amp circuit	98"	58"	3500 lb.



CEMB Digital Wheel Balancers

ER72 DIGITAL WHEEL BALANCER

- Professional digital wheel balancer especially designed for tire dealers • Automatic Distance & Diameter Entry with Width Sonar (3D)
- Fully automatic Spotter Laser System for best correction possible • Full-time accuracy with Static unbalance always displayed on screen • LED to light the work space inside the rim • New automatic arm to measure automatically diameters up to 30" • Standard locking with Quick Nut • Electromagnetic brake for easy weight placement • Available 110VAC or 220VAC • Wide working space • Direct selection ounces/grams • Optimization program for compensation of rim and tire unbalance
- One Button Split & Hidden Weight Program

ER75 DIGITAL WHEEL BALANCER

- A high volume RFV diagnostic wheel balancer, which comes in two variations, uniquely uses advanced balancing features such as Dynamic AutoAdaptive with One-Plane Balancing and RFV measurement combined with HubMatch
- All the best features from CEMB balancers are combined with HubMatch to ensure the assembly is round when rolling on the vehicle
- The ER75TD is available with either manual locking or pneumatic locking • **One Plane Balancing;** Offers a single ideal correction plane, indicating the exact point within the rim where the wheel can be balanced. Minimizing both static and dynamic unbalance, using a single counterweight thus saving time • **HubMatch®** balancing clocks the RFV high point of the assembly to the vehicle hub before mounting it at the 12 o'clock position.

EZ10 3D DATA ENTRY WHEEL BALANCER

- Space-Saver wheel balancer • Exclusive direct weight placement 3D inner data entry arm uses 3D Virtual Sonar and AutoAdaptive enhancement software to provide a faster, higher quality wheel balance service
- Eliminates the time and hassle of caliper rim width data entry • Motorized, fast 5-second average cycle time • High quality, robust design, extremely accurate balancing with a simple to use interface • Electro-magnetic brake holds wheel steady for easier weight placement • Handles steel and custom wheels with choice of clip-on, tape weight and hidden spoke modes up to 30" rim diameter
- Great for small garages, repair shops or back up to larger machines • 110v, 50/60 Hz.

SERVICE EQUIPMENT



481-00072



481-00075



481-00010

ASCOT NO.	MFG. NO.	DESCRIPTION
481-00072	ER72	ER72 Digital Wheel Balancer

ASCOT NO.	MFG. NO.	DESCRIPTION
481-00075	ER75	ER75 Digital Wheel Balancer

ASCOT NO.	MFG. NO.	DESCRIPTION
481-00010	EZ10	EZ10 3D Data Entry Wheel Balancer



CEMB Digital Wheel Balancers (cont.)

C212 MOTORIZED DIGITAL TRUCK WHEEL BALANCER WITH PNEUMATIC LIFT

• C212 balances steel & light alloy wheels of cars, light & heavy commercial trucks and bus thanks to a 40mm shaft and a large assortment of adaptors and cones standard • Pneumatic stationary brake useful during wheel mounting and counterweight application • Pedal operated pneumatic lift (soft type) enables excellent centering accuracy of the wheel on the shaft • Automatic Distance & Diameter Entry (2D) • Fully Automatic Cycle with Breaking • 51" wheel guard • Self-Diagnosis and Self-Calibration • MENUS FOR QUICK SELECTION OF THE FOLLOWING: Inches to millimeters, unbalanced thresholds 0.1 or 0.25 ounces (1 or 5g) • Direct selection ounces/grams • Optimization program for compensation of rim and tire unbalance • "Static" program—plus 4 ALU programs for PAX, light alloy or special shaped rims • One Button Split & Hidden Weight Program • Direct weight location program (no repositioning of stick-on weights)

PNEUMATIC STATIONARY BRAKE

FULLY AUTOMATIC CYCLE



481-00212

C206 MOBILE HAND SPIN TRUCK WHEEL BALANCER

• Mobile Hand Spin Truck Wheel Balancer for cars and light & commercial trucks • C206 balances HD truck and bus tires as well as light truck and car tires • Portable for mobile service when 12VDC available • Automatic Distance & Diameter Entry (2D) • Standard lightweight battery pack for use when power not available • Self-Diagnosis and Self-Calibration • MENUS FOR QUICK SELECTION OF THE FOLLOWING: Inches to millimeters, unbalanced thresholds 0.1 or 0.25 ounces (1 or 5g) • Direct selection ounces/grams • Optimization program for compensation of rim and tire unbalance • "Static" program—plus 4 ALU programs for PAX, light alloy or special shaped rims • One Button Split & Hidden Weight Program • Direct weight location program (no repositioning of stick-on weights)

PORTABLE FOR MOBILE SERVICE



481-00206

ASCOT NO.	MFG. NO.	DESCRIPTION
481-00212	C212	Motorized Digital Truck Wheel Balancer with Pneumatic Lift

ASCOT NO.	MFG. NO.	DESCRIPTION
481-00206	C206	Mobile Hand Spin Truck Wheel Balancer

SERVICE EQUIPMENT



Corghi Wheel Balancers

EM9250 LED DISPLAY WHEEL BALANCER

- Compact design • More programs and features than competitive LED display units



The display and weight tray.



The spin unit.

EM9280 MONITOR DISPLAY WHEEL BALANCER

- Balancing with monitor, compact and essential with professional performance
- LCD MONITOR: High resolution graphics and dedicated software
- SMART-ARM: Electronic input of wheel diameter and distance with FSP function which automatically activates the balancing programs, avoiding keypad selection
- AWD AUTOMATIC SENSOR (Auto width Device): For contactless measurement of wheel width
- Quick and intuitive sensitivity calibration

ET88 WHEEL BALANCER

- Top-of-the-range balancing machine for truck wheels
- Low balancing speed, optimization of average balancing speed
- 7 ALU truck and car programs
- Automatic acquisition of wheel/machine distance
- Adhesive weight application device
- Stunning user-friendly graphic interface
- Automatic wheel weight application position search
- Visual wheel wobble inspection
- Automatic identification of fitted wheel (truck/car)
- OPT FLASH and 200kg lift with safety handle



443-95207

443-09557

443-00088

CORGI TIRE CHANGER SPECIFICATIONS

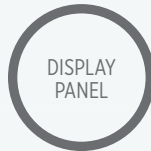
ASCOT NO.	MFG. NO.	POWER SUPPLY	MAX TIRE OUTSIDE	GROSS SHIPPING WEIGHT
443-00088	ET88WL	230V-1ph-50hz	52"	562 lb.
443-95207	EM9250	110V-1ph-60hz	44"	350 lb.
443-92801	EM9280	110V-1ph-60hz	44"	380 lb.



Corghi Wheel Balancers (cont.)

EM9550 PLUS LED DISPLAY WHEEL BALANCER

- Larger design • More programs and features than competitive LED display units • Wheel dimension detection with digital gauge • Automatic wheel positioning • LED light to brighten the work area • Quick application of adhesive counterweights • Manual wheel clamping w/quick ring • DISPLAY PANEL: High resolution graphics • AWC (Auto Width Calculation): Reduced wheel data entry time with the AWC function which suggests the most probable width value • WEIGHT TRAY: Many large trays to house counterweights and various tools • Inclined front side for operator access • Space-saving wheel guard



EM9580 PLUS MONITOR DISPLAY WHEEL BALANCER WITH SONAR

- Balancing with monitor, compact and essential with professional performance • LCD MONITOR: High resolution graphics and dedicated software • SMART-ARM: Electronic input of wheel diameter and distance with FSP function which automatically activates the balancing programs, avoiding keypad selection • AWD AUTOMATIC SENSOR (Auto Width Device): For contactless measurement of wheel width • Quick and intuitive sensitivity calibration • Sonar included



443-09557

443-09587

CORGI TIRE CHANGER SPECIFICATIONS

ASCOT NO.	MFG. NO.	POWER SUPPLY	MAX TIRE OUTSIDE	GROSS SHIPPING WEIGHT
443-09557	EM9550	110V-1ph-60hz	44"	440 lb.
443-09587	EM9580	110V-1ph-60hz	44"	440 lb.



EM9980C PLUS DIAGNOSTIC WHEEL BALANCER

- For passenger cars, light trucks and motorbikes • TOUCHLESS SYSTEM: High precision laser sensors automatically and quickly measure wheel dimensions
- Automatic wheel positioning • Integrated led light illuminates the work area
- Precision counterweight application
- High-precision laser measurement of wheel run-out • Touchscreen Interface
- USB ports for peripheral devices and software upgrades • MULTI-FUNCTION (ONE-TOUCH) BUTTON: Quick program selection
- WEIGHT TRAY: Many large trays to house counterweights and tools
- Space-saving wheel guard • Inclined front side for operator access • Rear splash guard

EYELIGHT PLUS DIAGNOSTIC WHEEL BALANCER

- For passenger cars, light trucks and motorbikes • AUTOMATIC, PRECISE WHEEL CLAMPING: Reduces work time
- TOUCHLESS SYSTEM: High precision laser sensors automatically and quickly measure wheel dimensions • Automatic wheel positioning • Integrated led light illuminates the work area
- Precision counterweight application • High-precision laser measurement of wheel run-out • IPOS (Intelligent Positioning) • Touchscreen Interface
- USB ports for peripheral devices and software upgrades • MULTI-FUNCTION (ONE-TOUCH) BUTTON: Quick program selection
- WEIGHT TRAY: Many large trays to house counterweights and tools
- Space-saving wheel guard • Inclined front side for operator access • Rear splash guard

ET66 MOTOR DRIVEN BALANCER

- Precise motor-driven balancer designed for heavy duty wheels and can also accommodate passenger wheels • Compact, easy to use and reliable • LED display provides ease of use, manual data entry and comes with dynamic, static, and alum programs
- Low balancing speed reduces spin times • User-friendly keyboard



443-09983



443-01101



443-90201

HEAVY
DUTYCOMPACT
& EASY
TO USE

CORGI TIRE CHANGER SPECIFICATIONS

ASCOT NO.	MFG. NO.	POWER SUPPLY	MAX TIRE OUTSIDE	GROSS SHIPPING WEIGHT
443-09983	EM9980C	10V/220V 60hz	44"	550 lb.
443-01101	EyeLightpls	110V/200V 60hz	44"	605 lb.
443-90201	ET66	110V/1ph/60hz	52"	485 lb.



Wheel Balancer Accessories

Haweke Quick Plate Tuner Tip

• Replacement Quick Tip for use with Haweke Quick Plate System • Replicates aftermarket wheel vehicle lug mount • Must be used on all aftermarket wheels for proper centering • Aftermarket tuner type Quick Tip • 58mm length, 19.5mm diameter



483-27382

ASCOT NO.	MFG. NO.	DESCRIPTION
483-27382	HW273E008 023	Haweke Quick Plate Tuner Tip

Haweke Quick Plate Land Rover Tip

• Replacement Quick Tip for use with Haweke Quick Plate System • Specific vehicle lug mount replication for Land Rover applications • Land Rover type Quick Tip, short • 38mm length, 34.5mm diameter



483-27389

ASCOT NO.	MFG. NO.	DESCRIPTION
483-27389	HW273E008 009	Haweke Quick Plate Land Rover Tip

Haweke Quick Plate Standard Tip - 38MM

• Replacement Quick Tip for use with Haweke Quick Plate System • Replicates vehicle lug mount • Standard conical type Quick Tip, short • 38mm length, 24.5mm diameter



483-27383

ASCOT NO.	MFG. NO.	DESCRIPTION
483-27383	HW273E008 003	Haweke Quick Plate Standard Tip - 38mm

Haweke Quick Plate Standard Tip - 58MM

• Replacement Quick Tip for use with Haweke Quick Plate System • Replicates vehicle lug mount • Standard conical Quick Tip, long • 58mm length, 22.5mm diameter



483-27385

ASCOT NO.	MFG. NO.	DESCRIPTION
483-27385	HW273E008 025	Haweke Quick Plate Standard Tip - 58mm

Haweke Quick Plate Ball Seat Tip

• Replacement Quick Tip for use with Haweke Quick Plate System • Replicates vehicle lug mount • Ball seat type Quick Tip • 48mm length, 24.5mm diameter



483-27387

ASCOT NO.	MFG. NO.	DESCRIPTION
483-27387	HW273E008 007	Haweke Quick Plate Ball Seat Tip

Haweke Hub Centering Solutions



483-40132

ASCOT NO.	MFG. NO.	DESCRIPTION
482-25411	HW150 400 110	9 Piece Pro Collet Kit
482-26460	HW160 400 060	Ford Precision Collet
482-26462	HW160 400 062	Toyota Precision Collet
482-26463	HW160 400 063	Chrysler Precision Collet 1
482-26464	HW160 400 064	Chrysler Precision Collet 2
482-25491	HW150 400 091	Cone Kit 40mm: Light Truck
483-40132	HW150 400 132	Haweke Pro Centering Kit VII

Note: All Hub Centering Products also available in 28, 36, 38mm except Duo Expert

Haweke Pro Centering Kit VII



483-40132

ASCOT NO.	MFG. NO.	DESCRIPTION
483-40132	HW150 400 132	Haweke Pro Centering Kit VII



Wheel Balancer Accessories (cont.)

Haweke Lug Centering Solutions

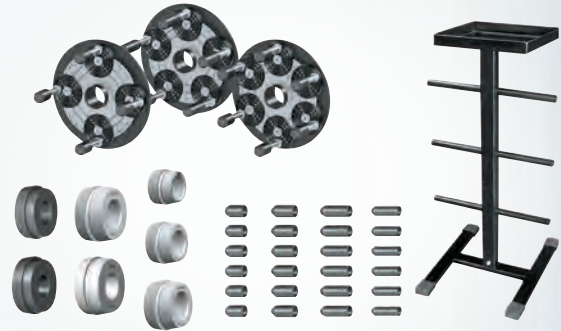


483-99409

ASCOT NO.	MFG. NO.	DESCRIPTION
483-99409	HW200 299 409	U.S. Flange Plate Kit 40mm
482-25649	HW210 400 002	Quick Plate Kit: 40mm

Note: Flange Plates and Quick Plates also available in 28, 36, 38mm

Haweke Kits



482-28147

ASCOT NO.	MFG. NO.	DESCRIPTION
482-28147	HW280 400 147	ProCentering System
482-28415	HW280 400 139	ProMax MD 40mm
482-28414	HW280 400 142	ProMax MD Standard 40mm

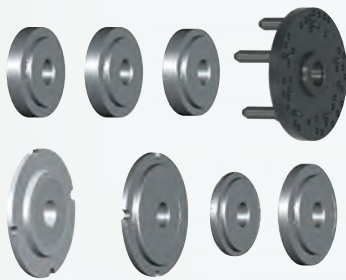
Haweke Storage Solutions

ASCOT NO.	MFG. NO.	DESCRIPTION
482-29895	HW900 008 205	Adapter Storage Stand



482-29895

Haweke Medium Duty Wheel Balancer Accessories

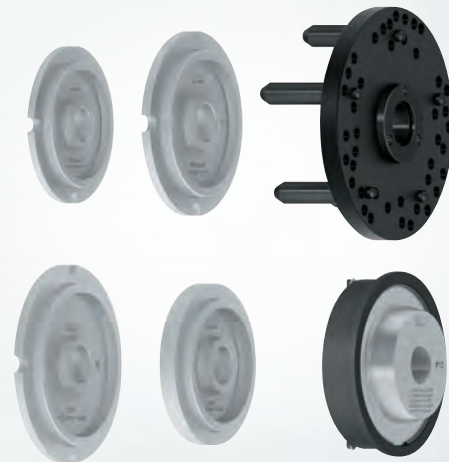


482-21374

ASCOT NO.	MFG. NO.	DESCRIPTION
482-21374	HW700 400 037	Medium Duty Flange Plate
482-27404	HW700 400 037	Medium Duty Five Arm Star
482-26447	HW160 400 047	Hub Pilot Sleeve 1 - 4.88/4.92"
482-26448	HW160 400 048	Hub Pilot Sleeve 2 - 5.59/6.69"
482-26467	HW160 400 067	Hub Pilot Sleeve 7 - 4.88/6.06"
482-29452	HW190 400 052	Hub Pilot Sleeve 3 - 5.46/5.25"
482-29460	HW190 400 060	Hub Pilot Sleeve 4 - 4.56"
482-29462	HW190 400 062	Hub Pilot Sleeve 5 - 4.6"
482-29471	HW190 400 071	Hub Pilot Sleeve 6 - 4.77"
482-28444	HW280 400 044	Universal Adaptor 8x6.5

Haweke New ProMax MD Kit - 40mm

• Professional Centering Solution for 8 and 10-lug medium duty applications • Combination of spring loaded and hub pilot discs provide professional mounting solution • One lug adapter with long plug-in studs for all MD applications • PROBLEM SOLVING SOLUTION FOR: Chevy/GMC 8x180 and 8x210 applications • PROBLEM SOLVING SOLUTION FOR: Ford 8x170, 8x200 and 10x225 applications • Problem solving solution for all 8x6.5 applications • Application chart for plate and collet look up by vehicle included



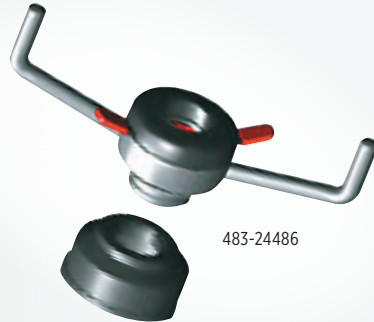
483-40014

ASCOT NO.	MFG. NO.	DESCRIPTION
483-40014	HW280 400 142	Haweke New ProMax MD Kit - 40mm



Wheel Balancer Accessories (cont.)

Haweke Quick Nuts and Pressure Cups



483-24486

ASCOT NO.	MFG. NO.	DESCRIPTION
483-24486	HW124 408 006	Quick Nut Steel w/ Hood 40-8mm
483-24433	HW140 404 033	Quick Nut HD (metal) 40mm-4mm
483-25433	HW140 403 033	Quick Nut - 40mm - 3mm
483-25403	HW143 283 003	Quick Nut - 28mm - 3mm
483-25406	HW143 283 006	Quick Nut w/ Handles - 28mm - 3mm
483-21982	HW190 008 002	Pressure Cup - 5"
483-29821	HW190 008 021	Pressure Cup - 8"
483-29827	HW190 008 027	Quick Nut Pressure Ring

Note: Quick Nuts are also available for 28, 36, 38m

Haweke Soft Grip Quick Nut - 40 X 8

- Improved design, essential wheel balancer tooling
- New ergonomic design with soft-touch handle
- New metal alloy threaded jaws last longer
- Larger bearing surface allows for higher torque
- Pressure ring is always attached to the quick nut (a must for quick plate/flange plate use)
- Optimized glide prevents fast wear of the thread shaft
- Redesigned, heavy duty pressure cup
- Improved quick action mechanism prevents opening under load
- Lower housing height for shorter shafts and larger profile wheels...always grabs the thread
- Lighter weight, easier to handle due to lower housing height



483-40800

ASCOT NO.	MFG. NO.	DESCRIPTION
483-40800	HW125 408 000	Haweke Soft Grip Quick Nut - 40 x 8

STEEL PROGRIP QUICKNUT WITH HANDLES AND PRESSURE CUP

- Essential wheel balancer tooling
- Clamping device speeds wheel mounting process on balancers
- Heavy duty steel design solution for Road Force balancers



483-40806



ASCOT NO.	MFG. NO.	DESCRIPTION
483-40806	HW124 408 006	Steel ProGrip QuickNut 40 x 8 with Handles and Pressure Cup

SOFTGRIP QUICKNUTS WITH HANDLES

- Essential wheel balancer tooling
- Upgraded threaded jaws with bigger bearing surface allows higher torque pressure
- Softgrip clamping device will not open under load
- New alloy metal jaws provides longer life for threaded jaws
- Torque ring is ever present - removal not required for use with pressure cup
- Heavier duty pressure cup
- Lower overall housing height enables use with quick or flange plates on shorter shafts



483-40301

483-40401

483-40801



ASCOT NO.	MFG. NO.	DESCRIPTION
483-40301	HW125 403 001	SoftGrip Quick Nut 40 x 3 with Handles
483-40401	HW125 404 001	SoftGrip Quick Nut 40 x 4 with Handles
483-40801	HW125 408 001	SoftGrip Quick Nut 40 x 8 with Handles



PRESSURE CUP FOR HAWEKA SOFT GRIP QUICK NUTS

- Must be used with rubber ring (HW190 008 005) • Works with all Soft Grip Quick Nuts (Not standard quick nuts) • Rigid, heavy duty design prevents flex during balancer spin
- Long lasting, hard plastic composition • Snap Connects easily to Soft Grip Quick Nuts



483-08065

ASCOT NO.	MFG. NO.	DESCRIPTION
483-08065	HW190 008 065	Pressure Cup for Haweka Soft Grip Quick Nuts

PRESSURE RING FOR ALL PROGRIP QUICKNUTS

- Pressure Ring must be present on ProGrip QuickNuts when using Quick or Flange Plates • Without the pressure ring, the clamping device does not provide enough torque pressure to press rim on cones/collets evenly and consistently eliciting inaccurate balancing results



483-08027

ASCOT NO.	MFG. NO.	DESCRIPTION
483-08027	HW190 008 027	Pressure Ring for all ProGrip QuickNuts

PROGRIP PRESSURE CUP

- Pressure Cup for all ProGrip Quicknuts 40mm, 38mm, 36mm, 28mm
- HW143 403 003, HW143 403 006, HW143 383 003, HW143 383 006, HW143 363 003, HW143 363 006, HW143 283 003, HW143 283 006, HW143 404 003, HW143 404 006, HW143 285 006, HW143 405 006, HW140 403 033, HW140 404 033



483-08002

ASCOT NO.	MFG. NO.	DESCRIPTION
483-08002	HW190 008 002	ProGrip Pressure Cup

RUBBER COVER FOR 5" PRESSURE CUP

- Provides rubberized protection between wheel rim and pressure cup



483-08005

ASCOT NO.	MFG. NO.	DESCRIPTION
483-08005	HW190 008 005	Rubber Cover for 5" Pressure Cup

BACKING SPRING

- Must be present on all balancers with open mid centering devices/hubs (Coats) • Without backing spring, wheels can only be front coned – not acceptable for proper balancing



483-40015

ASCOT NO.	MFG. NO.	DESCRIPTION
483-40015	HW190 400 015	Backing Spring

UNIVERSAL SPACER & UNIVERSAL DONUT

- Spacer provides necessary distance between mid centering device and cone/collet to prevent bottoming out and/or mid centering cup interference • Must use spacer with ProCollets 7-9 • Donut required for use with backing spring on open mid centering device balancers (Coats)



PROVIDES NECESSARY SPACE

483-08047

483-40045

ASCOT NO.	MFG. NO.	DESCRIPTION
483-08047	HW190E008 047	Universal Spacer
483-40045	HW190E008 045	Universal Donut
483-40047	HW190E400 045	Universal Donut - 40mm



Wheel Balancer Accessories (cont.)

NORTH AMERICAN FLANGE PLATE KIT 40MM

- Replicates vehicle wheel lug mount on the balancer
- Provides consistent, even pressure when mounting wheel on cones/collets for precision balancing results

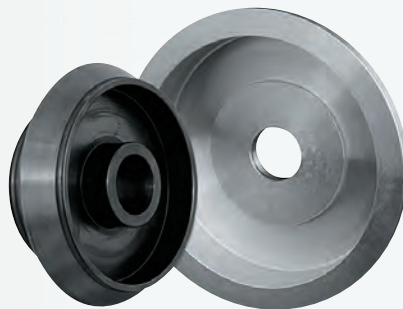


483-99409

ASCOT NO.	MFG. NO.	DESCRIPTION
483-99409	HW200 299 409	North American Flange Plate Kit 40mm

LIGHT TRUCK CONE KIT 40MM

- Covers hub ranges 120mm-174mm • Kit includes a cone and distance spacer • Works on all balancer makes and models with 40mm shaft



483-40091

ASCOT NO.	MFG. NO.	DESCRIPTION
483-40091	HW150 400 091	Light Truck Cone Kit 40mm

HAWEKA DUO COLLET SPACER - 40MM

- Provides spacer and additional strength between Duo Collets and MCD Spring • Recommended for use on Coats balancers

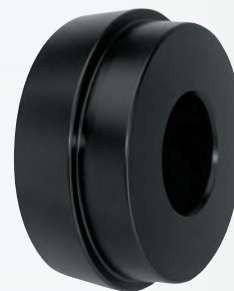


483-40001

ASCOT NO.	MFG. NO.	DESCRIPTION
483-40001	HW190 400 010	Haweke Duo Collet Spacer - 40mm

TOYOTA PRECISION COLLET

- Precision-designed, application-specific solution for balancing Toyota Truck wheels • Problem-solving precision collet for Toyota Tundra, Sequoia, Tacoma, 4Runner, FJ as well as Lexus SUV applications and more



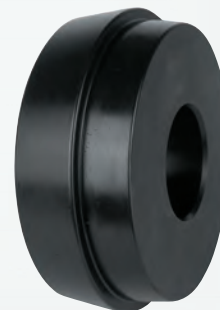
483-40060

ASCOT NO.	MFG. NO.	DESCRIPTION
483-40060	HW160 400 062	Toyota Precision Collet



FORD PRECISION COLLET

- Precision-designed, application-specific solution for balancing Ford light truck and SUV applications • Problem-solving precision collet for Ford F150, Expedition and Lincoln Navigator applications



483-40062

ASCOT NO.	MFG. NO.	DESCRIPTION
483-40062	HW160 400 060	Ford Precision Collet





Challenger Lifts

CL10 SERIES

10,000 LB. CAPACITY TWO-POST LIFT

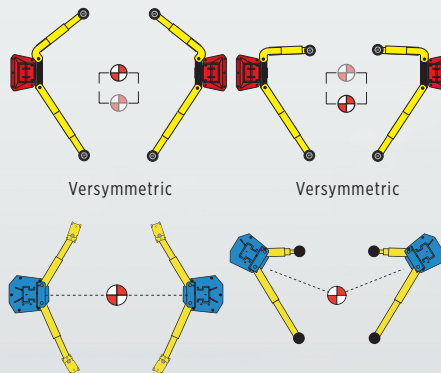
COMPLETE PRODUCTIVITY: Conventional Power Controls, Versymmetric® offset 3-stage front and rear arms

- Versymmetric® offset front arms provide directSPOT™ to vehicle lift points and safely lifts both symmetrically and asymmetrically within the same service bay maximizing service capabilities and revenue potential
- Padded overhead shut off system prevents vehicle damage from being raised too high.
- Oversized 5" diameter pulley and heavy duty 5/16" cable reduces stress on equalization system and increases cable life
- Fully gusseted base plate design reduces column deflection. 48" elongated carriage design decreases load on bearing
- Single point mechanical lock release system with jacket coated protection and no lock cable pulleys, and double clutch release bar protects cable from stretching while disengaging both column locks simultaneously
- 11' 8" standard height with 2' and 3' extensions available allows lift to be placed in standard service bay with 12' ceiling
- Rubber door guards provide added security against vehicle door damage



304-00010

2 Lifts in One™



2 Lifts in One

Why should you be forced to decide what type of vehicles you service the most?

- Asymmetric Lifts accommodate 70% of top 20 selling vehicles, Symmetric Lifts accommodate 30% of the top 20 selling vehicles
- Versymmetric® Lifts accommodate 100% of the top 20 selling vehicles, properly lifts cars, trucks, vans and SUVs with one lift

ASCOT NO.	MFG. NO.	DESCRIPTION
304-00010	CL10	CL10 Series: 10,000 lb. Capacity Two-Post Lift

CHALLENGER 2-POST LIFT SPECIFICATIONS

ASCOT NO.	MFG. NO.	MAX. CAP. (LB.)	OVERALL WIDTH	BETWEEN COLUMNS	DRIVE-THRU WIDTH	OVERALL HEIGHT	UNDER BAR CLEARANCE	FRONT ARM LENGTH	REAR ARM LENGTH	MAX. LIFT HEIGHT	POWER REG.
304-00010	CL10	10,000	11' 6-1/2" to 11' 11"	110" to 114-1/2"	100-1/2" to 105"	11' 11"	11' 2-1/2"	27" to 41"	42" to 59"	74-5/8"	2HP, Single Phase, 208V-230V



Challenger Lifts (cont.)

MAXIMUM PRODUCTIVITY (CL10V3)

- Conventional Power Controls
- Versymmetric® Plus offset 3-stage front + 3-stage rear arms
- Adjustable overhead height can now be set at 11'2" (Standard height: 11'8")



304-01102

NOW WITH ADJUSTABLE HEIGHT

ASCOT NO.	MFG. NO.	DESCRIPTION
304-01102	CL10V3	Maximum Productivity



SA10: 10,000 LB. CAPACITY TWO-POST LIFT

- Challenger's SA10 2-post lift offers 10,000 lb. capacity • You can install the SA10 in either symmetric or asymmetric position, depending on your service needs • The SA10 also features adjustable height and width options to further customize it to meet your needs. Innovative 3-stage front and 2-stage rear arms provide greater overall sweep



304-00210

SYMMETRIC OR ASYMMETRIC POSITION

ASCOT NO.	MFG. NO.	DESCRIPTION
304-00210	SA10	SA10: 10,000 lb. Capacity Two-Post Lift



CHALLENGER 2-POST LIFT SPECIFICATIONS

ASCOT NO.	MFG. NO.	MAX. CAP. (LB.)	OVERALL WIDTH	BETWEEN COLUMNS	DRIVE-THRU WIDTH	OVERALL HEIGHT	UNDER BAR CLEARANCE	FRONT ARM LENGTH	REAR ARM LENGTH	MAX. LIFT HEIGHT	POWER REG.
304-01102	CL10V3	10,000	11' 6-1/2" to 11' 11"	10" to 114-1/2"	100-1/2" to 105"	11' 11"	14' 2-1/2"	19-13/16" to 42"	37-5/8" to 60"	74-5/8"	2HP, Single Phase, 208V-230V
304-00210	SA10	10,000	129" to 137-1/2"	106-3/4" to 137-1/2"	92-3/4" to 94-1/2"	136-1/2" to 142-1/2"	131-1/8" to 137-1/8"	22-3/8" to 41-1/2"	38-1/4" to 59"	74-1/2"	2HP, Single Phase, 60Hz



VLE10: 10,000 LB. CAPACITY TWO-POST LIFT WITH VERSYMMETRIC® TECHNOLOGY

- 3-Stage Versymmetric® front arms and 2-Stage rear arms provide a wide arm sweep for asymmetric and symmetric lifting in the same service bay • 11.875" standard height fits in service bays with 12' ceiling height • Double telescoping screw pads with rubber foot pad • Padded overhead shut-off system prevents vehicle damage • Jacketed pulley-less single-point mechanical lock release system that was once exclusive to our CL series lifts are now standard on the VLE10 • Rubber door guards protect vehicle from door damage • Premium powder coat finish provides long-lasting durability • Plated arm restraints and arm pins inhibit rust and provide long-lasting durability

LE12: 12,000 LB. CAPACITY TWO-POST LIFT

- Heavy-Duty 2-stage telescoping arms provide excellent reach and retraction to accommodate vehicle lifting points • 13'-10" or 14'-7" adjustable column height accommodates higher profile vehicles and provides maximum headroom to work underneath vehicles • Heavy-Duty telescoping Screw Pads • Padded overhead shut off system • Single-point mechanical lock release system allows technician to disengage both column locks simultaneously • ALI/ETL certified

SERVICE EQUIPMENT



304-00111



304-00120

ASCOT NO.	MFG. NO.	DESCRIPTION
304-00111	VLE10	VLE10 Series: 10,000 lb. Capacity Two-Post Lift with Versymmetric® Technology

ASCOT NO.	MFG. NO.	DESCRIPTION
304-00120	LE12	LE12 Series: 12,000 lb. Capacity Two-Post Lift

CHALLENGER 2-POST LIFT SPECIFICATIONS

ASCOT NO.	MFG. NO.	MAX. CAP. (LB.)	OVERALL WIDTH	BETWEEN COLUMNS	DRIVE-THRU WIDTH	OVERALL HEIGHT	UNDER BAR CLEARANCE	FRONT ARM LENGTH	REAR ARM LENGTH	MAX. LIFT HEIGHT	POWER REG.
304-00111	VLE10	10,000	131.625"	110.25"	98.375"	143.875" to 167.875"	137"	22.3125" to 39.375"	38.375" to 55.375"	74.75"	208-230v Single Phase, 30-amp breaker
304-00210	LE12	10,000	139.75"	115"	103"	166" to 175"	159.5" to 168.5"	35.75"	54.5"	77.75"	208-230v Single Phase, 30-amp breaker



Challenger Lifts (cont.)

CL12-LC: 12,000 LB. CAPACITY LOW CEILING TWO-POST LIFT W/ THREE STAGE ARMS

• Service more vehicles and make more money with Challenger Lifts' new CL12-LC, 12,000 lb. capacity two post low ceiling lift • The new CL12-LC comes standard with 3-stage front and 3-stage rear arms providing the advantage of lifting many common cars, trucks, vans and SUVs within rated capacity



ASCOT NO.	MFG. NO.	DESCRIPTION
304-00121	CL12-LC	CL12-LC: 12,000 lb. Capacity Low Ceiling Two-Post Lift w/ Three Stage Arms

CLFP9: 9,000 LB. CAPACITY FLOOR PLATE LIFT

- 10'-7/8" overall column height is ideal for servicing vehicles in a low ceiling height • Low profile drive-over floor plate for easy vehicle positioning • 3-stage front + 3-stage rear arms provide excellent reach and retraction to lift a variety of vehicles • Electric/hydraulic heavy-duty chain lifting operation with cable equalization
- Dual point mechanical pull-lock cable release system



ASCOT NO.	MFG. NO.	DESCRIPTION
304-00009	CLFP9	9,000 lb. Capacity Floor Plate Lift



FRAME ENGAGING ADAPTERS ARE REQUIRED WHEN LIFTING TRUCKS OR OTHER FRAME VEHICLES.

CHALLENGER 2-POST LIFT SPECIFICATIONS

ASCOT NO.	MFG. NO.	MAX. CAP. (LB.)	OVERALL WIDTH	BETWEEN COLUMNS	DRIVE-THRU WIDTH	OVERALL HEIGHT	UNDER BAR CLEARANCE	FRONT ARM LENGTH	REAR ARM LENGTH	MAX. LIFT HEIGHT	POWER REG.
304-00009	CLFP9	9,000	11' 5-1/2"	109"	98-3/16"	N/A	N/A	24 1/2" to 44-1/2"	24-1/2" to 44-1/2"	79-1/8"	2HP, Single Phase, 60Hz
304-00121	CL12-LC	12,000	142"	114-1/2"	103-1/2"	143"	136"	27-1/2"	59"	80-1/4"	2HP, Single Phase, 60HZ



4115 SERIES: 15,000 LB. CAPACITY FOUR POST LIFTS

- All-new and wider 22" runways
- Open and closed front design for better ergonomics, allowing easy access to adjustment points on both standard or long length runway racks
- Improved 4-wheel alignment wheelbase for extended alignment capabilities allowing you to service both long and short wheelbase vehicles
- Louvered approach ramps prevent wheel-spin and are more effective than diamond tread or abrasive strips
- Keep your shop looking stylish & clean with our new and improved all enclosed front column and crossbeam design
- Expect a longer and smoother operational life with our UHMW internally encapsulated slide block
- Compatible with the industry's latest imaging alignment systems
- 17 locking positions with improved lock design

4P14FEX & 4P14XFX: 14,000 LB. CAPACITY FOUR POST LIFT

- The highest rise in the industry provides more working room underneath vehicles
- Louvered approach ramps for positive vehicle traction
- Solid piece column construction provides rigidity and stability
- Oversized solid machined steel pulleys for prolonged pulley and cable life
- Adjustable runways to accommodate a variety of tread widths
- 14 level locking positions for a variety of general service tasks
- ALI/ETL certified
- OPTIONAL ACCESSORIES: 7,000 lb. rolling jacks for brake and tire work; Optional bolt on alignment kit converts general service application into alignment rack



305-41150



305-41400

CHALLENGER 4-POST LIFT SPECIFICATIONS

ASCOT NO.	MFG. NO.	MAX. CAP. (LB.)	OVERALL WIDTH	LENGTH OVERALL	INSIDE COLUMNS	HEIGHT OF COLUMNS	HEIGHT OF RUNWAYS	WIDTH OF RUNWAYS	WIDTH BETWEEN RUNWAYS	MAX. LIFT HEIGHT	POWER REG.
305-41150	4115EFO (Std, Open Front, Flat)	15,000	Front: 142", Rear: 141.75	250.75"	Front: 120.75", Rear: 125.5"	Front: 99.25", Rear: 98"	7"	22.375"	40.625"	78"	208-230v
305-41151	4115XFO (Ext., Open Front, Flat)	15,000	Front: 142", Rear: 141.75	277"	Front: 120.75", Rear: 125.5"	Front: 99.25", Rear: 98"	7"	22.375"	40.625"	78"	208-230v
305-41152	4115EFX (Std, Closed Front, Flat)	15,000	141.75"	247.625"	125.5"	98"	7"	22.375"	40.625"	78"	208-230v
305-41153	4115XFX (Ext., Closed Front, Flat)	15,000	141.75"	275.5"	125.5"	98"	7"	22.375"	40.625"	78"	208-230v
305-41400	4P14FEX	14,000	10" 10' 3/4"	20" 4-1/2"	116"	90-1/2"	7"	20"	40" - 43"	78"	208-230v
305-41401	4P14FEX	14,000	10" 10' 3/4"	20" 4-1/2"	116"	90-1/2"	7"	20"	40" - 43"	78"	208-230v



Challenger Lifts (cont.)

EV1020: 10,000 LB. CAPACITY IN GROUND LIFT

- Offset 3-stage front and rear safety arms
- 87" drive through capacity • 50% more bearing contact than competitors
- Increases stability • Stainless steel air-lock release cylinder prevents rust

NEW ADDITIONS: Larger 8-1/2" diameter chrome piston • Enhanced raised wiper at top and bottom of bearing provides better grease retention • Minimizes contamination from entering into bearings



307-01021 (Lowered)



87" DRIVE THROUGH CAPACITY

307-01021 (Raised)

CLHM-140 AND CLHM-190: HEAVY DUTY MOBILE COLUMN LIFTS

- Challenger's heavy-duty mobile lifting system are robust, yet easily maneuverable and can be operated on almost any solid surface, indoors or out
- Our heavy-duty mobile lifts are also capable of lifting vehicles of any axle length or wheelbase
- Mobile lifts provide the flexibility and convenience to lift any rubber-tired vehicle, from small passenger cars to large 2-, 3- or 4-axle vehicles up to 152,000 pounds
- Models are available in 14,000 lb. or 19,000 lb. capacity columns

ROBUST & HEAVY DUTY

MOBILE LIFT



308-00140



The CHLM locks.



The CHLM lifting system is conveniently wireless for a clutter-free work area.

ASCOT NO.	MFG. NO.	DESCRIPTION
307-01021	EV1020	10,000 lb. Capacity In Ground Lift

ASCOT NO.	MFG. NO.	DESCRIPTION
308-00140	CHLM 140-4	14,000 lb. Capacity Mobile Column Lift
308-00190	CHLM 190-4	19,000 lb. Capacity Mobile Column Lift



MR6: 6,000 LB. CAPACITY MID-RISE LIFT

- Portable mid-rise lift with Heavy-Duty tow dolly provides flexibility to service vehicles anywhere, inside or out • 7 locking positions allow technician to work at an ergonomic height to increase productivity and minimize fatigue • Electric motor mounted on tow dolly provides convenience and ease of maneuverability
- Single push button power unit with release valve provides convenience when lifting and lowering vehicles • Slip-on rubber pad adapter kit with height extension accommodates high profile vehicles • Sliding/rotating arm design accommodates meeting pick-up points on a wider range of vehicles

The portable MR6 is easy to move around from one location to another as needed.



PORTABLE AND EASY TO MOVE

SRM10: 10,000 LB. CAPACITY SHORT-RISE LIFT

- Standard with 4 two-position adapter blocks for increased vehicle spotting versatility • Standard storage trays are conveniently placed on each side of the lift to prevent lug nuts and other small parts from being misplaced • Dual cylinders provide stable 10,000 lb. lifting capabilities to accommodate a wide range of vehicles • Floor mounted diamond plated approach ramps help to prevent slipping • 3 locking positions • ALI/ETL certified

303-00010



307-00006



THREE LOCKING POSITIONS

ASCOT NO.	MFG. NO.	DESCRIPTION
307-00006	MR6	6,000 lb. Capacity Mid-Rise Lift

ASCOT NO.	MFG. NO.	DESCRIPTION
303-00010	SRM10	10,000 lb. Capacity Short-Rise Lift

Rubber Blocks & Lift Pads

309-00003

RUBBER LIFT PAD (5" ROUND)

- RUBBER PAD DIMENSIONS: 5" round • Kit of four rubber pads
- Replacement pads for Nussbaum lifts

ASCOT NO.	MFG. NO.	DESCRIPTION
309-00003	JOK03M	Rubber Lift Pad - 5" Round



RUBBER LIFT PAD (4" X 5")

- RUBBER PAD DIMENSIONS: 4" x 5"
- Kit of four rubber pads • Replacement pads for Ammco, Ben Pearson lifts

ASCOT NO.	MFG. NO.	DESCRIPTION
309-00005	JOK05M	Rubber Lift Pad - 4" x 5"

309-00005

RUBBER LIFT PAD (5" X 5")

- RUBBER PAD DIMENSIONS: 5" x 5" • Kit of four rubber pads • Replacement pads for Forward, Worth, American, Gemini, Grand, Tuxedo, Eagle, Whip lifts

ASCOT NO.	MFG. NO.	DESCRIPTION
309-00007	JOK07M	Rubber Lift Pad - 5" x 5"

309-00007

RUBBER LIFT PAD (4" X 4")

- RUBBER PAD DIMENSIONS: 4" x 4"
- Kit of four rubber pads • Replacement pads for Challenger CL9 and CL10 lifts

ASCOT NO.	MFG. NO.	DESCRIPTION
309-00009	JOK090	Rubber Lift Pad - 4" x 4"

309-00009

RUBBER LIFT PAD (3.25" X 4")

- RUBBER PAD DIMENSIONS: 3.25" x 4"
- Kit of four rubber pads • Replacement pads for Rotary SPO10, SPO12 lifts

ASCOT NO.	MFG. NO.	DESCRIPTION
309-00022	JOK22D	Rubber Lift Pad - 3.25" x 4"

309-00022

309-00404

RUBBER JACK PADS FOR TESLA VEHICLES

- Lifting jack pads for tesla models
- Set of four in convenient carrying case
- Protect the vehicle, battery and paint from damage
- Can be used with floor jack or 2-post lifts
- Top piece fits into designated factory lifting points



ASCOT NO.	MFG. NO.	DESCRIPTION
309-00404	TJP4	Rubber Jack Pads for Tesla Vehicles - Set of 4

RUBBER LIFT PAD (5.25" ROUND)

- RUBBER PAD DIMENSIONS: 5.25" round • Kit of four rubber pads • Replacement pads for Challenger CL10, Quality lifts

ASCOT NO.	MFG. NO.	DESCRIPTION
309-00014	JOK140	Rubber Lift Pad - 5.25" Round

309-00014

RUBBER BLOCK 1.5"

- RUBBER BLOCK DIMENSIONS: 6" x 4" • Kit of four 1.5" rubber blocks • Spacer blocks for Rotary Airjacks and all Mid-Rise pad lifts

309-00011

ASCOT NO.	MFG. NO.	DESCRIPTION
309-00011	JORB-1	Rubber Block 1.5"

RUBBER BLOCK 3"

- RUBBER BLOCK DIMENSIONS: 6" x 4" • Kit of four 3" rubber blocks • Spacer blocks for Rotary Airjacks and all Mid-Rise pad lifts

309-00013

ASCOT NO.	MFG. NO.	DESCRIPTION
309-00013	JORB-3	Rubber Lift Pad - 4" x 4"

Rolling Jacks & Work Stations



ROLLING JACKS

• Optional 6,000 lb. and 7,500 lb. capacity rolling jacks allow easy access to brakes and wheels • Available for the 4P14 Series lifts • Air/hydraulic operation • Adjustable width • Low vehicle drive-over clearance • Stackable height extensions with built-in storage rack • Factory installed and protected filter lubricator and regular



218-00060

ASCOT NO.	MFG. NO.	DESCRIPTION
218-00060	RJ6	Air/Hydraulic Operation, 40 Series and AR40 Series
309-61275	RJ7.5	Air/Hydraulic Operation, For 4P14 and 4015 series lifts

3-TON CAPACITY AIR / HYDRAULIC PUMP OPERATED ROLLING LIFT BRIDGE

Used in quick lube pit applications or in conjunction with above ground lifts. The bridge straddles the lift rails and raises the vehicle's tires off the rails for wheel alignment, brake, tire and suspension work. Push button air/hydraulic pump provides safe, quick lifting up to a height of 20-3/4".



218-79324

ASCOT NO.	MFG. NO.	DESCRIPTION
218-79324	79324G	3-Ton Capacity Air / Hydraulic Pump Operated Rolling Lift Bridge

AIR ELECTRIC WORK STATIONS

• Air and Electric workstation with filter, lubricator and regulator for four post car and truck lifts • Increase productivity with air supply and electric outlets on the four post automotive lift column • Convenient power source for extension lights and other tools needed when servicing cars and trucks

ASCOT NO.	MFG. NO.	DESCRIPTION
309-10264	B10264	Air/Electric with Filter/Lubricator/Regulator for Two Post Lifts
309-99700	B99700	Tire Tool Manager Work Station with Filter Lubricator/Regulator



INCREASES PRODUCTIVITY

309-10264

SERVICE EQUIPMENT